



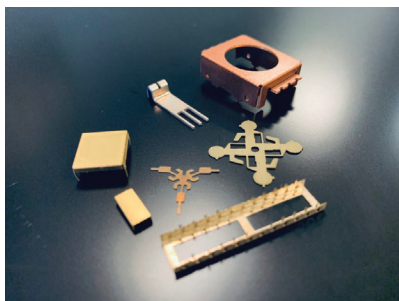
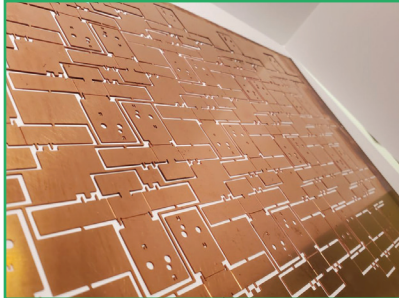
# MANUFACTURING GROUP

ISO 9001:2015

1906 CLOVER RD, MISHAWAKA, IN 46545

MET-MFG.COM

MET specializes in precision sheet metal fabrication using photochemical etching, waterjet cutting, and other value added fabrication processes. Advantages of photochemical etching include low tooling costs, stress-free application that allows tight manufacturing tolerances, product consistency, and a fast turn-around time. Waterjet cutting offers similar benefits but can handle thicker materials and different alloys. Both production methods are set up for large volume manufacturing.



## PRIMARY SERVICES

Photochemical Etching

### Advantages

- Low Tooling Cost
- Rapid Prototype
- Burr Free Ability
- Quick Lead Times

### Major Industries Served

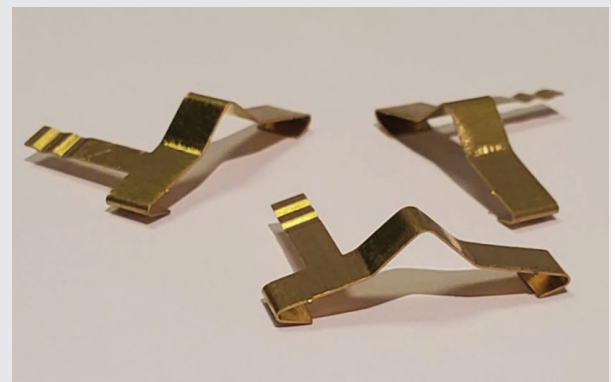
- Semi-Conductor
- Aerospace
- Small Electronics
- Medical
- EV Battery/Electrical

## STOCK METALS

- Copper
- Beryllium Copper
- Brass
- Bronze
- Phosphorus Bronze
- Inconel
- Kovar
- Mu Shielding Metals
- Nickel
- Nickel Silver
- Cold Rolled Steel & Tool Steel
- Stainless Steel

## PRODUCTS

- Battery Connectors
- Base Plates
- EMI/RFI Shields
- Encoder Discs
- Filters/Screens
- Ground Plates
- Lead Frames
- Shims and Washers
- Microwave Circuits
- Capacitor Covers
- Rosette Springs
- Terminal Contacts
- Nameplates
- Braille Plates



**LIGHTHOUSE**

sales group llc

DESIGN • ENGINEER • INNOVATE  
MANUFACTURER'S REP AGENCY  
[www.LighthouseSalesGroup.com](http://www.LighthouseSalesGroup.com)

**Chris Bielawski • 815-391-3776**

Email: [cbielawski@lighthousesalesgroup.com](mailto:cbielawski@lighthousesalesgroup.com)

[www.lighthousesalesgroup.com](http://www.lighthousesalesgroup.com)

Mailing Address: PO Box 2011, Loves Park, IL 61130  
Shipping Address: 5826 Candover Rd., Loves Park, IL 61111





# MANUFACTURING GROUP

ISO 9001:2015

1906 CLOVER RD, MISHAWAKA, IN 46545

MET-MFG.COM



## PRIMARY SERVICES

### WATERJET CUTTING

#### *Advantages*

- Accuracy of +/- .003"
- Wide Substrate Offerings/Capabilities
- High cut edge quality
- No HAZ, pure material

#### *Major Industries Served*

- EV Battery
- Marine
- Aerospace
- Aluminum Products
- Defense

#### *Typically Cut Products*

- Metal Alloys
- Rubbers
- Plastics
- Foams
- Epoxy reinforced Composites
- Glass
- Granite
- Stone

#### *Value Added Services*

- Forming
- Welding
- Plating
- Powder Coating
- Heat Treating
- Passivation
- Milling
- Tapping
- Countersink
- Laser Cutting
- Burnishing
- Hardware Installation
- Specialty Packaging
- E-Coating
- CMM Inspection/PPAP
- Microscope Surface Inspection



**LIGHTHOUSE**  
sales group llc

DESIGN • ENGINEER • INNOVATE  
MANUFACTURER'S REP AGENCY  
[www.LighthouseSalesGroup.com](http://www.LighthouseSalesGroup.com)

**Chris Bielawski • 815-391-3776**

Email: [cbielawski@lighthousesalesgroup.com](mailto:cbielawski@lighthousesalesgroup.com)

[www.lighthousesalesgroup.com](http://www.lighthousesalesgroup.com)

Mailing Address: PO Box 2011, Loves Park, IL 61130  
Shipping Address: 5826 Candover Rd., Loves Park, IL 61111

