



Woodland

PLASTICS CORPORATION

Your First Choice Thermoset Molder

1340 W. National Ave. • Addison, IL 60101
 sales@woodlandplastics.com
 www.woodlandplastics.com
 Ph: 630-543-1144 • F: 630-543-1525
 ISO 9001 :2015 CERTIFIED

WHO WE ARE

YOUR FIRST CHOICE THERMOSET MOLDER
 TECHNOLOGY-INTEGRATED MANUFACTURER
 ISO 9001:2015 CERTIFIED



WHAT WE DO

CUSTOM THERMOSET MOLDING
 ENGINEERING SERVICES & TOOLING DESIGN
 ASSEMBLY & SOURCING SERVICES
 CUSTOM THERMOPLASTIC MOLDING



WHY WE DO IT BEST

EXPERIENCE & EXPERTISE IN THERMOSET MOLDING
 UTILIZE TECHNOLOGY TO DRIVE BUSINESS
 COMMITMENT TO QUALITY



AUTOMOTIVE

- Ashtrays
- Gear Housings
- Headlamp Reflectors
- Heat Shields
- Powertrain Components
- Pulleys
- Solenoids & Caps
- Transmission Components
- Thrust Washers
- Valves & Covers

APPLIANCE


- Bases
- Control Panels
- Covers & Lids
- Grill Components
- Handles
- Knobs
- Microwave Cookware
- Motor Housings
- Oven Components
- Vent Trims

ELECTRICAL & LIGHTING

- Baffles
- Bases
- Brush Holders
- Circuit Breakers
- End Caps
- Electrical Housings
- Enclosures
- Insulators
- Motor Components
- Relays & Switches

OTHER

- Covers
- Frac Balls
- Fuel Cell Components
- HVAC Components
- Pump Housings
- Pump Impellers
- Slip Rings
- Starter Caps
- Wind Turbine Components
- Wiper Plugs



LIGHTHOUSE
sales group llc

DESIGN • ENGINEER • INNOVATE
 MANUFACTURER'S REP AGENCY
 www.LighthouseSalesGroup.com

Chris Bielawski • 815-391-3776
 Email: cbielawski@lighthousesalesgroup.com
www.lighthousesalesgroup.com

Mailing Address:
 PO Box 2011, Loves Park, IL 61130
 Shipping Address:
 5826 Candover Rd., Loves Park, IL 61111





Woodland

PLASTICS CORPORATION

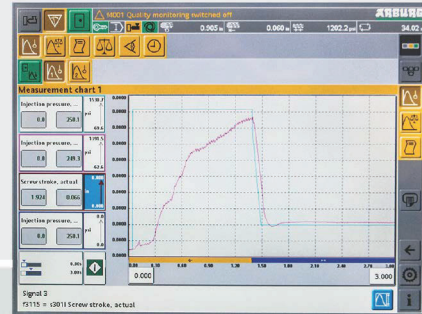
Your First Choice Thermoset Molder

1340 W. National Ave. • Addison, IL 60101
 sales@woodlandplastics.com
 www.woodlandplastics.com
 Ph: 630-543-1144 • F: 630-543-1525
 ISO 9001 :2015 CERTIFIED

HIGH HEAT TOLERANCES | METAL-TO-THERMOSET CONVERSION | LIGHTWEIGHT, COST EFFICIENT

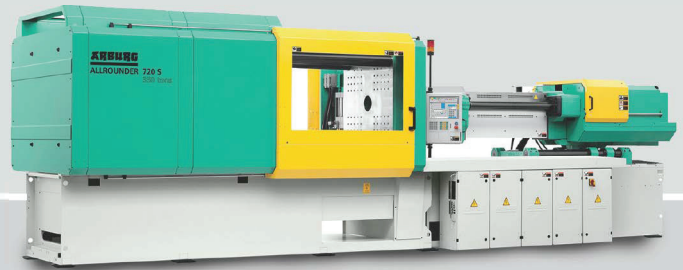
TECHNOLOGY-DRIVEN MANUFACTURER

TECHNOLOGY INTEGRATED MANUFACTURING
 REAL-TIME ERP SYSTEM MONITORS ENTIRE MANUFACTURING PROCESS
 STATE OF THE ART EQUIPMENT & MACHINERY
 AUTOMATED SECONDARY EQUIPMENT



COMMITMENT TO QUALITY

ISO 9001:2015 CERTIFIED
 EXCEED CUSTOMER EXPECTATIONS
 CONTINUOUS IMPROVEMENT & TRAINING
 100% ON-TIME DELIVERY
 TEAMWORK IS OUR SUCCESS TO QUALITY



MACHINE CAPABILITIES

INJECTION, INJECTION-COMPRESSION, & INSERT MOLDING
 MOLDING CAPACITY FROM 25 – 500 TONS
 ONE OR MULTIPLE CAVITIES
 PROTOTYPING & MEDIUM-LONG PRODUCTION RUNS
 MOLD SIZES UP TO 30" X 44" X 30"

MATERIAL CAPABILITIES

PHENOLIC RESINS
 BULK MOLDING COMPOUNDS (BMC)
 EPOXIES
 DIALLYL PHTHALATES (DAP)
 ENGINEERED THERMOPLASTICS



LIGHTHOUSE
 sales group llc

DESIGN • ENGINEER • INNOVATE
 MANUFACTURER'S REP AGENCY
 www.LighthouseSalesGroup.com

Chris Bielawski • 815-391-3776
 Email: cbielawski@lighthousesalesgroup.com
www.lighthousesalesgroup.com

Mailing Address:
 PO Box 2011, Loves Park, IL 61130
 Shipping Address:
 5826 Candover Rd., Loves Park, IL 61111



MEMBER IN GOOD STANDING
MANA
 Manufacturers & Agents
 PROFESSIONAL PARTNERS IN PROFITS