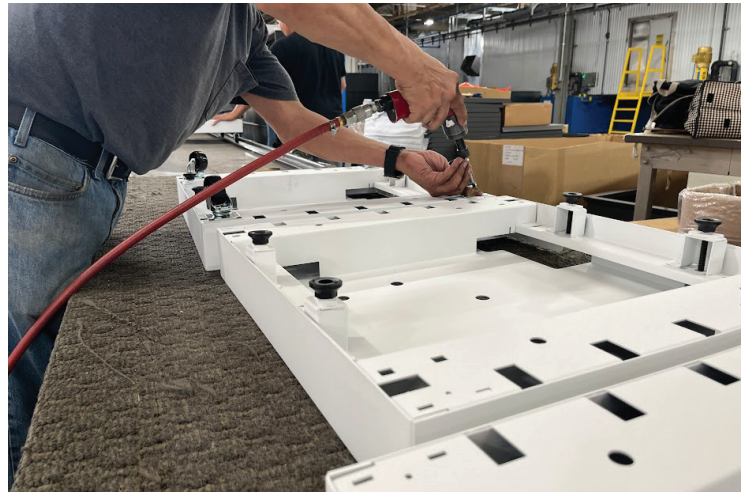
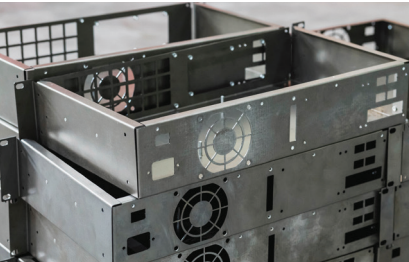
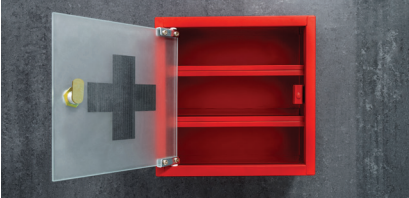




4620 W 19th Street  
Cicero, IL 60804  
Phone: 773.906.4875  
accuratemetalfab.com



Accurate Metal Fabricating has been providing sheet metal fabrication and perforating for over 75 years. Capabilities include: Laser cutting, robotic and manual welding, punching, forming, powder coating, assembly, value added engineering and prototyping on steel, stainless steel, aluminum, galvanized, and galvanized from 28 gauge to 1".



## 210,000 SQUARE FEET OF MANUFACTURING SPACE

### PRODUCT CAPABILITIES

Thickness: 28 Gauge to 1"  
Hot/Cold Rolled Steel  
Galvanneal/Galvanized  
Stainless Steel  
Aluminum, Brass, Copper  
Nickel Alloys

### PROCESS CAPABILITIES

#### Primary Operations

17 press brakes - Accurpress – max bend length 127"  
6 - Turret Presses – EMZ 3610 NT  
Bystronic C KW Laser Cell  
Amada Fiber and NT Lasers with automated loading  
Motoman HD20D-6 DX100 – Robotic Welder  
6 - Manual MIG Welding Machines  
3 - Manual TIG Welding Machines  
3 - Amada TS3SNT spot welders  
2 - Additional spot welders

#### Secondary Operations

Punch Presses – Shears & Levelers  
Drilling Presses – Stamping Presses  
CNC Horizontal Mills & Wire EDM  
Slitting & Notching  
Riveting  
Radius Rollers & Precision Rollers  
Large Tooling Library

#### In-House Finishing Operations

Grinding & Finishing  
Polishing, Deburring  
NEW Powder Coating Paint Line-1063'

#### 5-Stage Wash System

Quick Cube fast color change Booth  
8X Automatic Coating System – w/Manual Spray stations  
All Powder Types – Including Epoxy, polyester and Zinc-rich primer

### OUTSIDE OPERATIONS

Plating, Anodizing, Kynar or PU DF Resin  
Silk Screen Graphics & Logos  
Hard Coat & Oxides  
Passivate & Phosphates

### VALUE ADDED SERVICES

Engineering & Design Services Prototyping & Short Run  
Lights Out Capabilities  
Assembly & Fulfillment  
VMI – Vendor Managed Inventory

### CERTIFICATIONS

ISO 9001:2015 Certified

### MARKETS SERVED

OEM Components & Assemblies  
Retail/POP Merchandising & Display  
Lighting Fixtures  
Industrial Carts  
Enclosures & Cabinets  
HVAC – Guards & Grills  
Architectural & Landscape  
Medical  
Security – Transportation  
Military Weapon Racks



DESIGN • ENGINEER • INNOVATE  
MANUFACTURER'S REP AGENCY  
www.LighthouseSalesGroup.com

Chris Bielawski • 815-391-3776  
Email: [cbielawski@lighthousesalesgroup.com](mailto:cbielawski@lighthousesalesgroup.com)  
[www.lighthousesalesgroup.com](http://www.lighthousesalesgroup.com)

Mailing Address: PO Box 2011, Loves Park, IL 61130  
Shipping Address: 5826 Candover Rd., Loves Park, IL 61111

